

2025/26
Collection

viasit[®]

Mesh, Leather, Vinyl,
Outdoor





1318
Gabriel Spin 64013



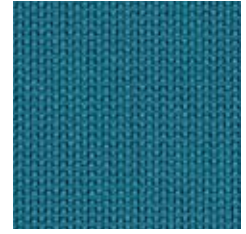
1316
Gabriel Spin 62057



1314
Gabriel Spin 68119



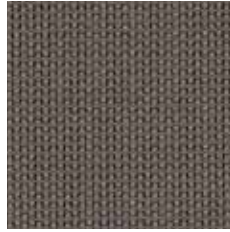
1311
Gabriel Spin 65011



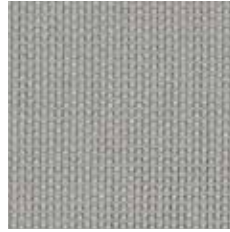
1312
Gabriel Spin 67007



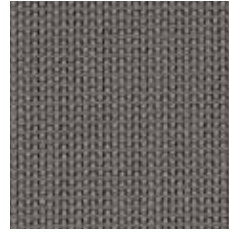
1319
Gabriel Spin 60021



1317
Gabriel Spin 60090



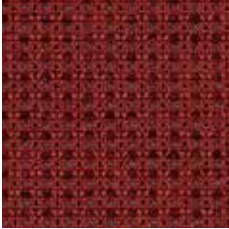
1315
Gabriel Spin 60004



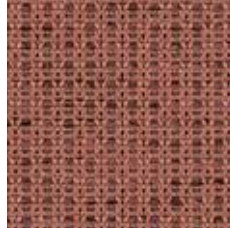
1313
Gabriel Spin 60011



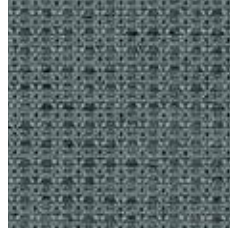
1310
Gabriel Spin 60999



G2-1383
Gabriel Tale 2527-64209



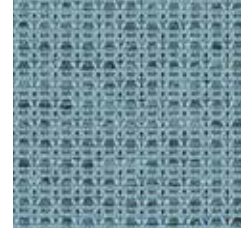
G2-1384
Gabriel Tale 2527-64210



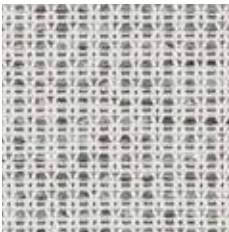
G2-1382
Gabriel Tale 2527-60124



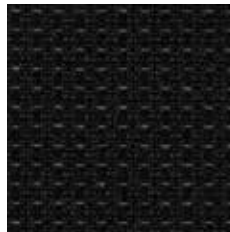
G2-1386
Gabriel Tale 2527-66186



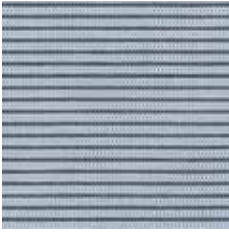
G2-1385
Gabriel Tale 2527-66185



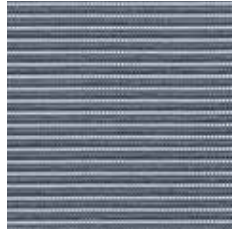
G2-1381
Gabriel Tale 2527-60122



G2-1380
Gabriel Tale 2527-60999



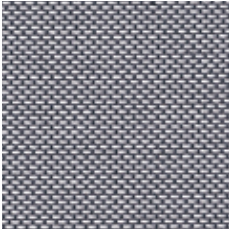
7500–Scope
Krall & Roth Rib Mesh 14



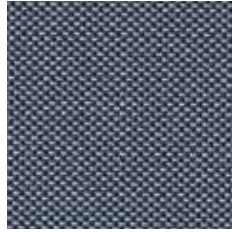
7501–Scope
Krall & Roth Rib Mesh 15



7502–Scope
Krall & Roth Rib Mesh 11



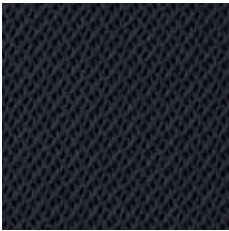
7306–Scope
Krall & Roth Mesh 4767-16



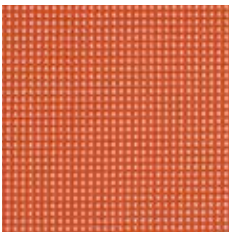
7305–Scope
Krall & Roth Mesh 4767-12



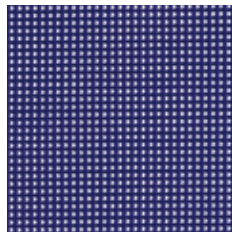
7304–Scope
Krall & Roth Mesh 4767-11



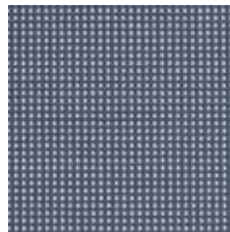
F2–Knitted Mesh
Ulmer



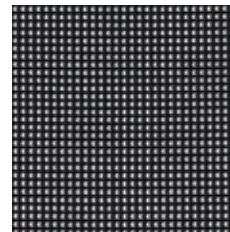
7301–Linea
Krall & Roth 4716-1-10-65



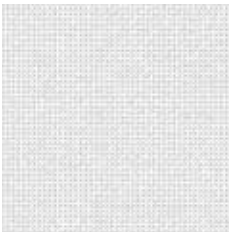
7302–Linea
Krall & Roth 4716-1-10-710



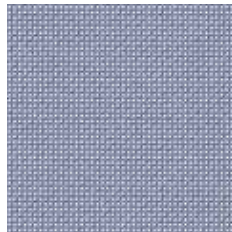
7303–Linea
Krall & Roth 4716-1-10-110



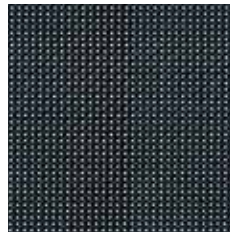
7300–Linea
Krall & Roth 4716-1-10-120



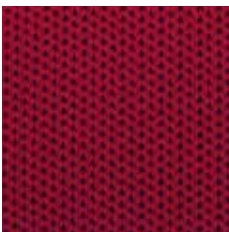
7397–Klikit
Serge Ferrari Batyline 5001



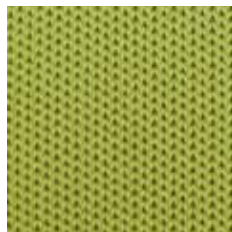
7396–Klikit
Serge Ferrari Batyline 5004



7395–Klikit
Serge Ferrari Batyline 5005



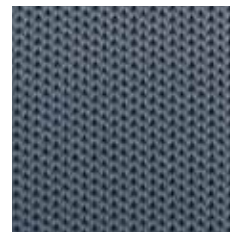
CoreChair–Form-fit Knit
Kobleder



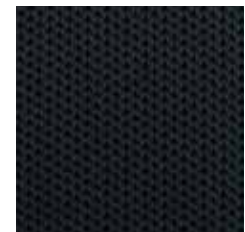
CoreChair–Form-fit Knit
Kobleder



CoreChair–Form-fit Knit
Kobleder



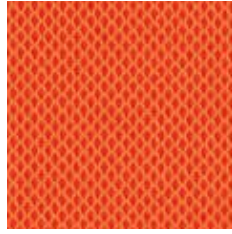
CoreChair–Form-fit Knit
Kobleder



CoreChair–Form-fit Knit
Kobleder



G3-7261
Gabriel Harlequin 64081



G3-7275
Gabriel Harlequin 63053



G3-7264
Gabriel Harlequin 62044



G3-7268
Gabriel Harlequin 68095



G3-7273
Gabriel Harlequin 68112



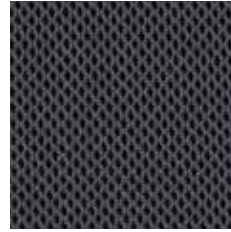
G3-7267
Gabriel Harlequin 66141



G3-7265
Gabriel Harlequin 66142



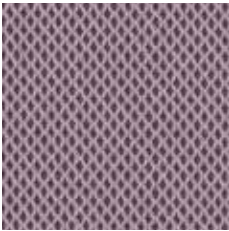
G3-7262
Gabriel Harlequin 66118



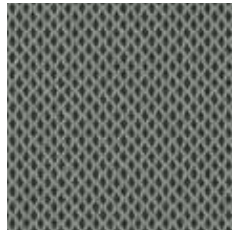
G3-7266
Gabriel Harlequin 60166



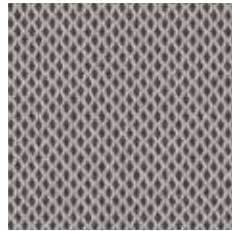
G3-7271
Gabriel Harlequin 61152



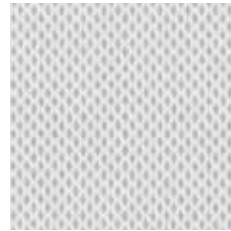
G3-7274
Gabriel Harlequin 65084



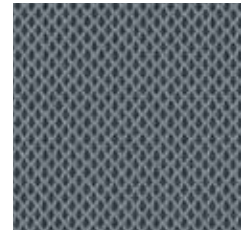
G3-7272
Gabriel Harlequin 68111



G3-7270
Gabriel Harlequin 61188



G3-7269
Gabriel Harlequin 61187



G3-7263
Gabriel Harlequin 60126



G3-7276
Gabriel Harlequin 66058



G3-7260
Gabriel Harlequin 60999



G3-5295
Gabriel Runner 64089



G3-5294
Gabriel Runner 63034



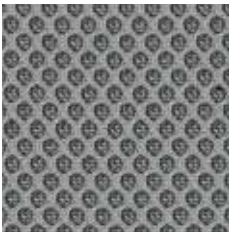
G3-5298
Gabriel Runner 68056



G3-5296
Gabriel Runner 66063



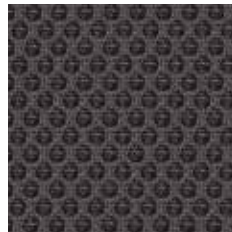
G3-5297
Gabriel Runner 66064



G3-5290
Gabriel Runner 60011



G3-5292
Gabriel Runner 60061



G3-5291
Gabriel Runner 60025



G3-5293
Gabriel Runner 60999



G4-5340
Crevin Alba 11 (Outdoor)



G4-5341
Crevin Alba 13 (Outdoor)



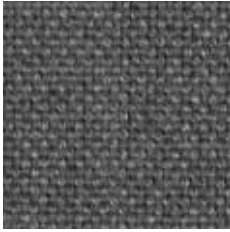
G4-5343
Crevin Alba 29 (Outdoor)



G4-5342
Crevin Alba 27 (Outdoor)



G4-5346
Crevin Alba 64 (Outdoor)



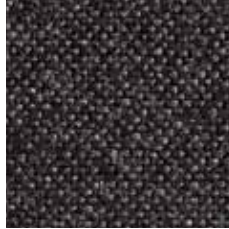
G4-5345
Crevin Alba 52 (Outdoor)



G4-5344
Crevin Alba 35 (Outdoor)



G4-119L
Camira HiTech AS061



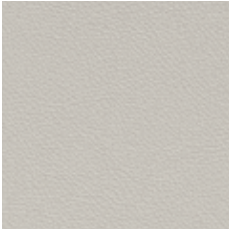
G4-123L
Camira HiTech AS078



G4-127L
Camira HiTech AS064



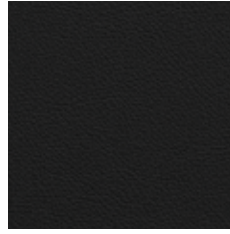
G4-132L
Continental Mano-S 646-1486



G6-638
Fiedler Objekt silver grey



G6-639
Fiedler Objekt elephant



G6-6390
Fiedler Objekt anthracite



G6-636
Fiedler Classic Nappa white



G6-640
Fiedler Classic Nappa silver grey



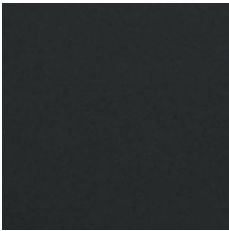
G6-643
Fiedler Classic Nappa rust



G6-642
Fiedler Classic Nappa horse



G6-641
Fiedler Classic Nappa grizzly



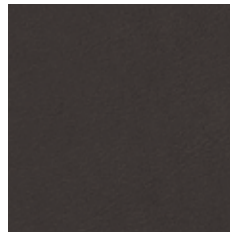
G6-610
Fiedler Palermo black



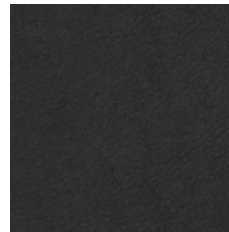
G7-664
Fiedler Naturale ruby



G7-663
Fiedler Naturale zimt



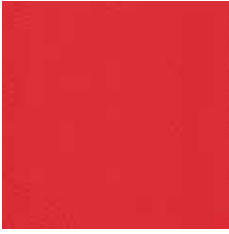
G7-662
Fiedler Naturale brown



G7-661
Fiedler Naturale anthracite



G7-660
Fiedler Naturale black



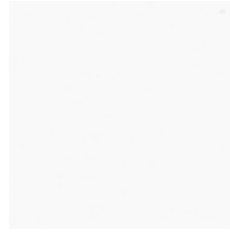
G5-3243

ATN Bielastic 238 x 1945



G5-3245

ATN Bielastic 238 x 1944



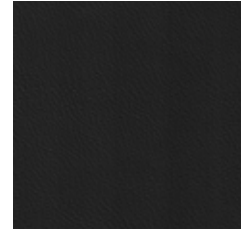
G5-3244

ATN Bielastic 238 x 1946



G5-3242

ATN Bielastic 238 x 2179



G5-3240

ATN Bielastic 238 x 1273



G4-3022

Continental Sotega 507-0680



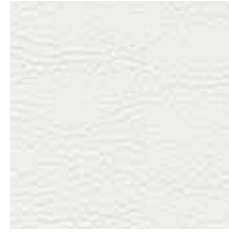
G4-3024

Continental Sotega 507-0910



G4-3023

Continental Sotega 507-0640



G4-3025

Continental Sotega 507-0646



G4-3021

Continental Sotega 507-0643



G3-311T

Continental Tundra 646-1288



G3-381T

Continental Tundra 646-1453



G3-316T

Continental Tundra 646-1196



G3-315T

Continental Tundra 646-1495



G3-314T

Continental Tundra 646-1197



G3-310T

Continental Tundra 646-1195



G4-3080

Sorrento EN F507-6076



G4-3082

Sorrento EN F507-6082



G4-3081

Sorrento EN F507-6081



G4-3235

Continental Evida F6800083



G4-3236

Continental Evida F6800074



G4-3232

Continental Evida F6800025



G4-3233

Continental Evida F6800076



G4-3231

Continental Evida F6800031



G4-3230

Continental Evida F6800032



G4-3234

Continental Evida F6800077

Alba Outdoor	G4 (Crevin)
Composition	67% polypropylene, 33% recycled polyester (33% recycled fibre)
Flammability	Crib 2 BS 5852 0/1, BS EN 1021 1&2 Cigarette and Match, BS 7176 Low hazard, CAL TB 117-2013, NFPA 260:2013. Will also pass other flammability standards. Flame retardant performance is dependent on the foam used.
Weight	610 g/lm
Width	140 cm
Pilling	4 / 5 (EN ISO 12945-2)
Light fastness	> 6 (EN ISO 105-B04, 1000 hrs)
Rubbing fastness	4 - 5 / 4 - 5 (EN ISO 105-X12 (wet, dry))
Abrasion	79,000 rubs Martindale (EN ISO 12947-2)
Chlorine fastness	4 - 5 (EN ISO 105-E03)
Sea water fastness	4 - 5 (EN ISO 105-E02)
Urine fastness	4 - 5 (EN ISO 105-E01)
Environment	STANDARD 100 by OEKO-TEX®, MADE IN GREEN by OEKO-TEX®

CoreChair Knit	Kobleder
Composition	100% polyester
Flammability	BS EN 1021 1&2 Cigarette and Match / B1 (DIN EN 4102)
Weight	500 g/lm
Width	-
Pilling	4 / 5 (EN ISO 12945-2)
Light fastness	6 / 8 (EN ISO 105-B02)
Rubbing fastness	> 4 (EN ISO 105-X12)
Abrasion	≥ 35,000 rubs Martindale (EN ISO 12947-2)
Environment	STANDARD 100 by OEKO-TEX®

F2 Knitted Mesh	Ulmer
Composition	100% polyester
Weight	156 g/lm
Environment	STANDARD 100 by OEKO-TEX®

Harlequin	G3 (Gabriel)
Composition	77% polyester, 23% post-consumer recycled polyester
Flammability	BS EN 1021 1&2 Cigarette and Match CA TB 117-2013 Will also pass other flammability standards. Flame retardant performance is dependent upon the foam used. Contains no flame retardant chemicals.
Weight	510 g/lm
Width	160 cm
Pilling	5 / 5 (EN ISO 12945-2)
Light fastness	5-7 / 8 (EN ISO 105-B02)
Rubbing fastness	4-5 / 5, 4-5 / 5 (EN ISO 105x12 (wet, dry))
Abrasion	100,000 rubs Martindale (EN ISO 12947-2)
Environment	STANDARD 100 by OEKO-TEX® / EU Ecolabel / Cradle to Cradle Certified® Bronze

Hi-Tech	G4 (Camira)
Composition	60% polypropylene, 29% wool, 10% viscose, 1% carbon fibre
Conductive	electrically conductive
Flammability	EN 1021 - 1&2 (cigarette & match) / BS 7176 Low Hazard
Weight	385 g /m²
Width	140 cm
Light fastness	5 / 8 (EN ISO 105-B02)
Rubbing fastness	5 / 5, 5 / 5 (EN ISO 105x12 (wet, dry))
Abrasion	60,000 rubs Martindale (EN ISO 12947-2)

Kliik Mesh	Batylite (Serge Ferrari)
Composition	pvc coated synthetic fibre
Flammability	M2 - NFP92-507 / B1 - DIN4102-1 / CAL TB117 / IMO MSC.307 (88) (2010 FTP Code) Annex 1 Part 8
Weight	500 g/lm
Width	180 cm
Abrasion	> 120,000 rubs Martindale (EN ISO 12947-2)
Environment	Greenguard Gold

Linea Mesh	Krall & Roth
Composition	75% polyester, 25% polyamide
Flammability	DIN EN 1021: 2006 part 1 (cigarette test) when tested with non flame retardant foam B3 density 22 kg/m³ minimum ignitability classification of the upholstery composite according to DIN 66084 P-c
Weight	420 g/lm
Width	120 cm
Light fastness	5-7 / 8 (EN ISO 105-B02)
Rubbing fastness	4-5 / 5, 4-5 / 5 (EN ISO 105x12 (wet, dry))
Abrasion	40,000 rubs Martindale (EN ISO 12947-2)

Mano-S	G4 (Continental)
Composition	approx. 90 % pvc-compound approx. 10 % co/pes-knitted fabric
Conductive	electrically conductive
Weight	650 g/m²
Width	137 cm
Thickness	1.1 mm

Runner	G3 (Gabriel)
Composition	80% polyester / 20% post-consumer recycled polyester
Flammability	CA TB 117-2013 / BS EN 1021-1 Cigarette / BS EN 1021 1&2 Cigarette and Match / Class Uno UNI 9175 Class 2 I EMME Will also pass other flammability standards. Flame retardant performance is dependent upon the foam used. Contains no flame retardant chemicals.
Weight	510 g/lm
Width	160 cm
Pilling	5 / 5 (EN ISO 12945-2)
Light fastness	5-7 / 8 (EN ISO 105-B02)
Rubbing fastness	4-5 / 5, 4-5 / 5 (EN ISO 105x12 (wet, dry))
Abrasion	70,000 rubs Martindale (EN ISO 12947-2)
Environment	STANDARD 100 by OEKO-TEX®, EU Ecolabel

Scope Mesh	Krall & Roth
Composition	66% polyester, 34% polyamide
Flammability	DIN EN 1021: 1994-01 part 1 (cigarette test) when tested with non flame retardant foam B3 density 23 kg/m³ minimum ignitability classification of the upholstery composite according to DIN 66084 P-c
Weight	350 g/lm
Width	144 cm
Light fastness	5-7 / 8 (EN ISO 105-B02)
Rubbing fastness	4-5 / 5, 4-5 / 5 (EN ISO 105x12 (wet, dry))
Abrasion	200,000 rubs Martindale (EN ISO 12947-2)

Scope Rib Mesh	Krall & Roth
Composition	58% polyamide, 34% polyester, 8% polyacryl
Flammability	DIN EN 1021: 1994-01 part 1 (cigarette test) when tested with non flame retardant foam B3 density 23 kg/m³ minimum ignitability classification of the upholstery composite according to DIN 66084 P-c
Weight	400 g/lm
Width	160 cm
Light fastness	5-6 / 8 (EN ISO 105-B02)
Rubbing fastness	4-5 / 5, 4-5 / 5 (EN ISO 105x12 (wet, dry))
Abrasion	190,000 rubs Martindale (EN ISO 12947-2)

Spin	Gabriel
Composition	100% trevira CS
Flammability	NFP 92-503/504/505 M1 / DIN 4102 - B1 Class Uno UNI 8456 UNI 9174 / BS EN 1021-1 Cigarette BS EN 1021 1&2 Cigarette and Match / BS 5852 Crib 5 CA TB 117-2013 Will also pass other flammability standards. Flame retardant performance is dependent upon the foam used.
Weight	405 g/lm
Width	140 cm
Pilling	4-5 / 5 (EN ISO 12945-2)
Light fastness	5-8 / 8 (EN ISO 105-B02)
Rubbing fastness	4-5 / 5, 4-5 / 5 (EN ISO 105x12 (wet, dry))
Abrasion	70,000 rubs Martindale (EN ISO 12947-2)
Environment	STANDARD 100 by OEKO-TEX® / EU Ecolabel

Tale	G2 (Gabriel)
Composition	100% post-consumer recycled polyester
Flammability	BS EN 1021-1 Cigarette / BS EN 1021 1&2 Cigarette and Match CA TB 117-2013 Will also pass other flammability standards. Flame retardant performance is dependent upon the foam used. Contains no flame retardant chemicals.
Weight	365 g/lm
Width	140 cm
Pilling	5 / 5 (EN ISO 12945-2)
Light fastness	6-8 / 8 (EN ISO 105-B02)
Rubbing fastness	4-5 / 5, 4-5 / 5 (EN ISO 105x12 (wet, dry))
Abrasion	100,000 rubs Martindale (EN ISO 12947-2)
Environment	STANDARD 100 by OEKO-TEX® / EU Ecolabel

Classic Nappa	G6 (Fiedler)
Composition	natural leather, ecological mineral tanning
Flammability	DIN EN 1021 - 1&2 (cigarette & match) / NF D 60-013:2005 / IMO-Resolution MSC.307
Thickness	1.0 / 1.2 mm
Tear strength	≥ 20 N/mm (EN ISO 3377-1)
Light fastness	≥ 4 / 8 (EN ISO 105-B02)
Rubbing fastness	3 - 4 / 5, ≥ 4 / 5 (EN ISO 11640 (wet, dry))
Origin	Europe

Naturale	G7 (Fiedler)
Composition	natural leather, ecological mineral tanning
Flammability	DIN EN 1021 - 1&2 (cigarette & match)
Thickness	1.0 / 1.2 mm
Tear strength	≥ 20 N/mm (EN ISO 3377-1)
Light fastness	≥ 3 / 8 (EN ISO 105-B02)
Rubbing fastness	≥ 3 / 5, ≥ 3 / 5 (EN ISO 11640 (wet, dry))
Origin	Europe

Objekt	G6 (Fiedler)
Composition	natural leather, ecological mineral tanning
Flammability	DIN EN 1021 - 1&2 (cigarette & match) / NF D 60-013:2005 / IMO-Resolution MSC.307
Thickness	1.0 / 1.2 mm
Tear strength	≥ 20 N/mm (EN ISO 3377-1)
Light fastness	≥ 5 / 8 (EN ISO 105-B02)
Rubbing fastness	3 - 4 / 5, ≥ 4 / 5 (EN ISO 11640 (wet, dry))
Origin	Europe
Environment	Blue Angel (Blauer Engel)

Palermo	G6 (Fiedler)
Composition	natural leather, ecological mineral tanning
Flammability	DIN EN 1021 - 1&2 (cigarette & match)
Thickness	1.2 / 1.4 mm
Tear strength	≥ 20 N/mm (EN ISO 3377-1)
Light fastness	≥ 4 / 8 (EN ISO 105-B02)
Rubbing fastness	> 4 / 5, > 4 / 5 (EN ISO 11640 (wet, dry))
Origin	Europe

Bielastic	G5 (ATN)
Composition	85% pvc, 15% polyamide
Flammability	DIN EN 1021 1+2, BS 5852 - IS 0/1, NFP 92-503 (M2), ÖNORM B3825 (B1), IMO FTFC Part 8
Weight	650 g/m ²
Width	140 cm
Thickness	1.00 mm
Light fastness	≥ 6 (DIN EN ISO 105-B06)
Abrasion	≥120,000 rubs Martindale (EN ISO 12947-2)

Evida	G4 (Continental)
Composition	approx. 50% renewable raw materials, approx. 30% natural based raw materials, approx. 20% raw materials based on crude oil
Flammability	DIN EN1021-1+2, BS 5852 IS-0+1, CA TB 117-2013, UFAC/ NFPA260 Class 1, compliant with CAL AB 2998
Weight	750 g/m ²
Width	137 cm
Thickness	1.3 mm
Abrasion	≥150,000 rubs Martindale (EN ISO 5470-2)
Environment	STANDARD 100 by OEKO-TEX® / EU Ecolabel

Sorrento	G4 (Continental)
Composition	73% pvc compound, 25% co fabric, 2% pu-finish
Flammability	DIN EN 1021 1+2 / BS 5852 IS-0+1 / MVSS 302
Weight	780 g/m ²
Width	150 cm
Thickness	1.6 mm
Light fastness	≥ 5 / 8 (DIN EN ISO 105-B02)
Rubbing fastness	4,5 / 5, 4,5 / 5 (DIN EN ISO 150-X12 (wet, dry))
Abrasion	100,000 rubs Martindale (EN ISO 12947-2)

Sotega	G4 (Continental)
Composition	73% pvc compound, 25% co fabric, 2% pu-finish
Weight	780 g/m ²
Width	150 cm
Thickness	1.7 mm
Light fastness	≥ 5 / 8 (DIN EN ISO 105-B02)
Rubbing fastness	4,5 / 5, 4,5 / 5 (DIN EN ISO 150-X12 (wet, dry))
Abrasion	> 200,000 rubs Martindale (EN ISO 12947-2)

Tundra	G3 (Continental)
Composition	90% pvc compound, 10% co fabric
Weight	680 g/m ²
Width	137 cm
Thickness	1.0 mm
Light fastness	≥ 5 / 8 (DIN EN ISO 105-B02)
Rubbing fastness	4,5 / 5, 4,5 / 5 (DIN EN ISO 150-X12 (wet, dry))
Abrasion	> 100,000 rubs Martindale (EN ISO 12947-2)

All upholstery materials in our collection can be treated with Nano protection.



Viasit Bürositzmöbel GmbH
Boxbergweg 4
D-66538 Neunkirchen

Viasit International Ltd.
1–5 Clerkenwell Road
London EC1M 5PA
United Kingdom

www.viasit.com
info@viasit.com

