

2025/26
Collection



Fabrics





G3-5328
Gabriel Step Melange 64013



G3-5318
Gabriel Step Melange 62057



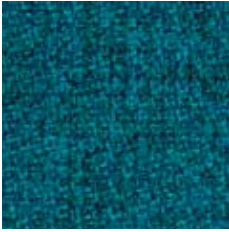
G3-5313
Gabriel Step Melange 68119



G3-5304
Gabriel Step Melange 68120



G3-5301
Gabriel Step Melange 67007



G3-5311
Gabriel Step Melange 67007



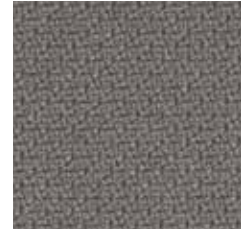
G3-5310
Gabriel Step Melange 66018



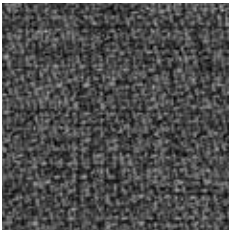
G3-5302
Gabriel Step Melange 65011



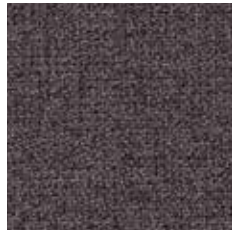
G3-5316
Gabriel Step Melange 60004



G3-5305
Gabriel Step Melange 60011



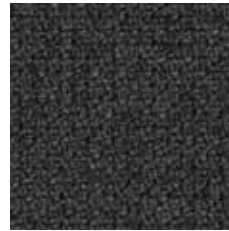
G3-5315
Gabriel Step Melange 60011



G3-5319
Gabriel Step Melange 61103



G3-5329
Gabriel Step Melange 60090



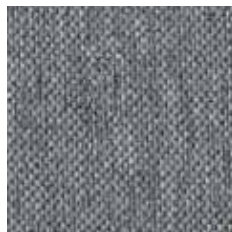
G3-5314
Gabriel Step Melange 60021



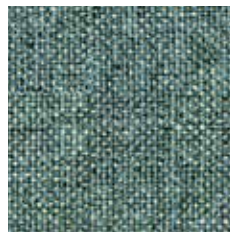
G3-5300
Gabriel Step Melange 60999



G1-1257
Camira Rivet EGL12



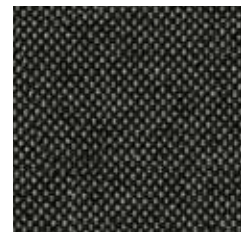
G1-1258
Camira Rivet EGL26



G1-1261
Camira Rivet EGL21



G1-1259
Camira Rivet EGL50



G1-1250
Camira Rivet EGL37



G2-1041

Gabriel Atlantic 63034



G2-1047

Gabriel Atlantic 64089



G2-1053

Gabriel Atlantic 65037



G2-1050

Gabriel Atlantic 68054



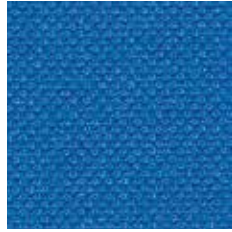
G2-1060

Gabriel Atlantic 67030



G2-1058

Gabriel Atlantic 66063



G2-1059

Gabriel Atlantic 66125



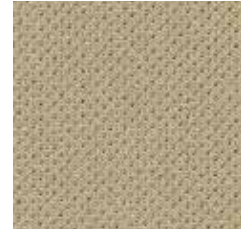
G2-1042

Gabriel Atlantic 66041



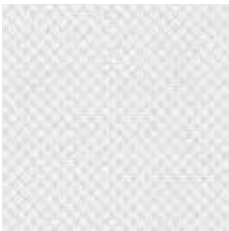
G2-1049

Gabriel Atlantic 66064



G2-1045

Gabriel Atlantic 61078



G2-1057

Gabriel Atlantic 60061



G2-1043

Gabriel Atlantic 60011



G2-1046

Gabriel Atlantic 60025



G2-1040

Gabriel Atlantic 60999



G5-7421

Camira Synergy LDS85



G5-7420

Camira Synergy LDS83



G5-7429

Camira Synergy LDS28



G5-7424

Camira Synergy LDS62



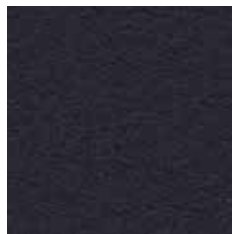
G5-7423

Camira Synergy LDS63



G5-7426

Camira Synergy LDS21



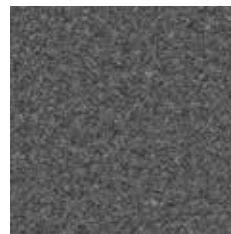
G5-7422

Camira Synergy LDS69



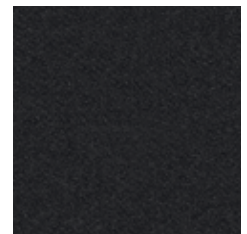
G5-7425

Camira Synergy LDS35



G5-7427

Camira Synergy LDS17



G5-7428

Camira Synergy LDS27



G2-1221

Gabriel Bond 65099



G2-1225

Gabriel Bond 62077



G2-1223

Gabriel Bond 61157



G2-1220

Gabriel Bond 66157



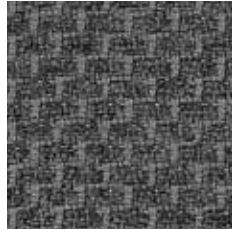
G2-1222

Gabriel Bond 61156



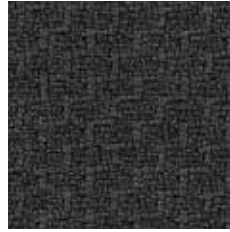
G2-1224

Gabriel Bond 60094



G2-1226

Gabriel Bond 60096



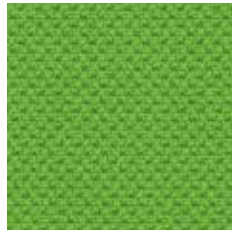
G2-1227

Gabriel Bond 60097



G1-1142

Fidivi Alba 4027



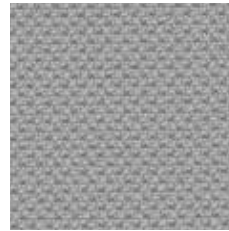
G1-1144

Fidivi Alba 7013



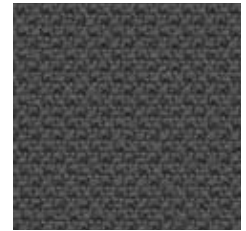
G1-1143

Fidivi Alba 6080



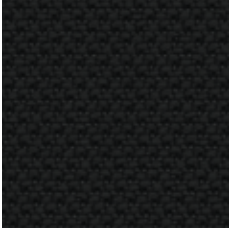
G1-1145

Fidivi Alba 8078



G1-1146

Fidivi Alba 8003



G1-1147

Fidivi Alba 8033



G1-1183

Fidivi Bondai 4011



G1-1195

Fidivi Bondai 4004



G1-1197

Fidivi Bondai 7048



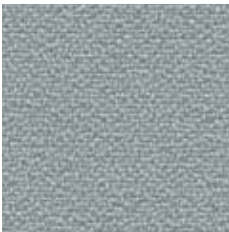
G1-1182

Fidivi Bondai 6015



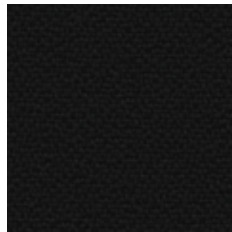
G1-1180

Fidivi Bondai 6098



G1-1196

Fidivi Bondai 8078



G1-1181

Fidivi Bondai 8033



G3-5362
Gabriel Felicity 64190



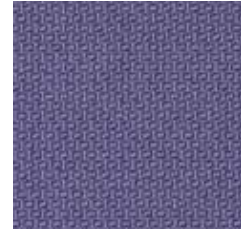
G3-5361
Gabriel Felicity 63088



G3-5365
Gabriel Felicity 67083



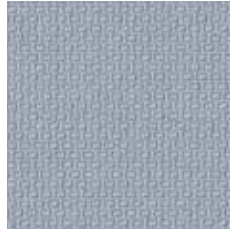
G3-5363
Gabriel Felicity 65103



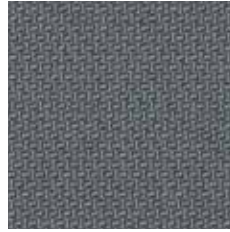
G3-5360
Gabriel Felicity 65102



G3-5366
Gabriel Felicity 61164



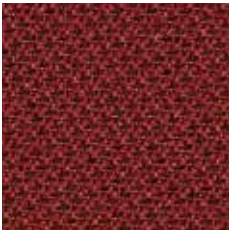
G3-5364
Gabriel Felicity 66161



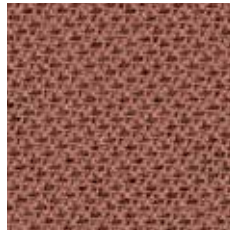
G3-5367
Gabriel Felicity 60107



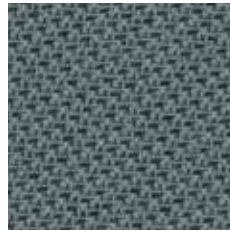
G3-5368
Gabriel Felicity 60999



G1-1373
Gabriel Tonal 2490-64209



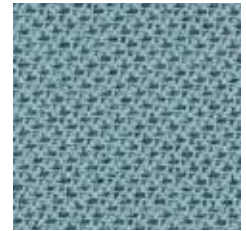
G1-1374
Gabriel Tonal 2490-64210



G1-1372
Gabriel Tonal 2490-60124



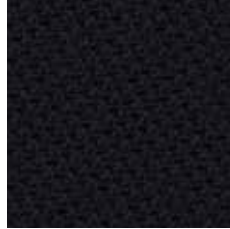
G1-1376
Gabriel Tonal 2490-66186



G1-1375
Gabriel Tonal 2490-66185



G1-1371
Gabriel Tonal 2490-60122



G1-1370
Gabriel Tonal 2490-60999



G3-1357
Eurotex Milan 36



G3-1356
Eurotex Milan 605



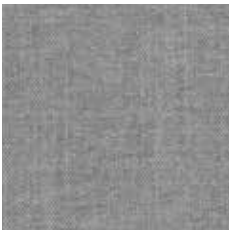
G3-1353
Eurotex Milan 437



G3-1354
Eurotex Milan 5009



G3-1355
Eurotex Milan 710



G3-1352
Eurotex Milan 120



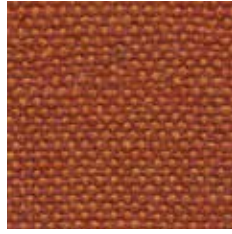
G3-1351
Eurotex Milan 46



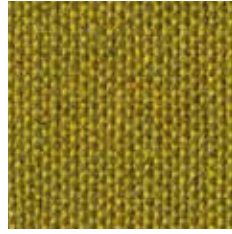
G3-1350
Eurotex Milan 516



G4-7400
Camira Main Line Flax MLF01



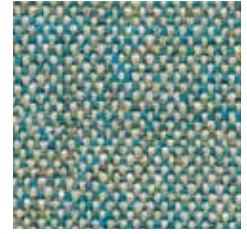
G4-7401
Camira Main Line Flax MLF13



G4-7402
Camira Main Line Flax MLF31



G4-7408
Camira Main Line Flax MLF18



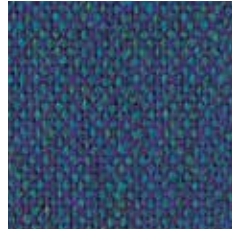
G4-7405
Camira Main Line Flax MLF24



G4-7404
Camira Main Line Flax MLF21



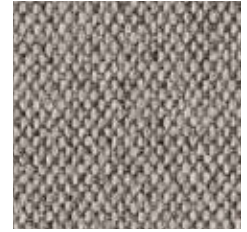
G4-7407
Camira Main Line Flax MLF22



G4-7409
Camira Main Line Flax MLF34



G4-7410
Camira Main Line Flax MLF36



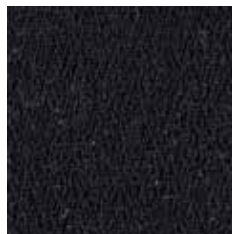
G4-7403
Camira Main Line Flax MLF02



G4-7411
Camira Main Line Flax MLF28



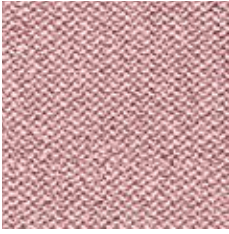
G4-7222
Camira 24/7 Flax FYR 02



G4-7221
Camira 24/7 Flax FYR 21



G4-7220
Camira 24/7 Flax FYR 19



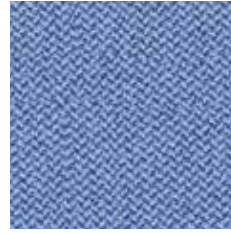
G1-1240
Camira Era CSE24



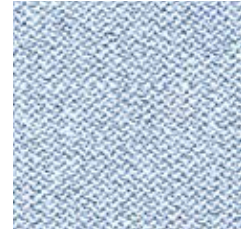
G1-1242
Camira Era CSE06



G1-1243
Camira Era CSE34



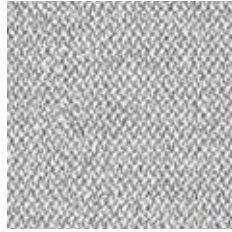
G1-1246
Camira Era CSE08



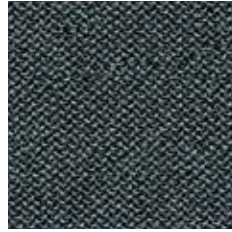
G1-1244
Camira Era CSE38



G1-1241
Camira Era CSE02



G1-1245
Camira Era CSE41



G1-1247
Camira Era CSE44



G1-1248
Camira Era CSE14



G2-1029
Camira Xtreme YS 079



G2-1107
Camira Xtreme YS 102



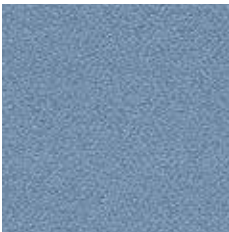
G2-1116
Camira Xtreme YS 084



G2-1039
Camira Xtreme YS 156



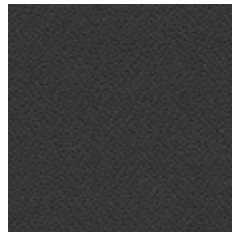
G2-1082
Camira Xtreme YS 082



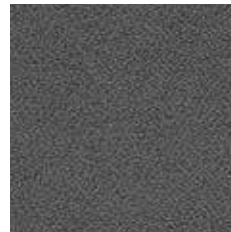
G2-1109
Camira Xtreme YS 095



G2-1023
Camira Xtreme YS 100



G2-1115
Camira Xtreme YS 145



G2-1021
Camira Xtreme YS 081



G2-1024
Camira Xtreme YS 026



G2-1020
Camira Xtreme YS 009

Alba	G1 (Fidivi)
Composition	100% polyester
Flammability	1 IM (UNI 9175) / BS 7176 / California TB 117 / CRIB 5 (BS 5852 part II) / EN 1021-1&2
Weight	450 g/lm
Width	140 cm
Pilling	5 / 5 (EN ISO 12945-2)
Light fastness	6 / 8 (EN ISO 105-B02)
Rubbing fastness	5 / 5, 4-5 / 5 (EN ISO 105x12 (wet, dry))
Abrasion	100,000 rubs Martindale (EN ISO 12947-2)
Environment	STANDARD 100 by OEKO-TEX®

Atlantic	G2 (Gabriel)
Composition	100% polyester
Flammability	CA TB 117-2013 / ASTM E 84 Class I / ÖNORM A3800-B1-B3825-Q1 UK / BS EN 1021-1 Cigarette / BS EN 1021-2 Match / DIN EN 13501-1 B-s1,d0 (glued) Will also pass other flammability standards. Flame retardant performance is dependent upon the foam used. Contains no flame retardant chemicals.
Weight	530 g/lm
Width	150 cm
Pilling	4-5 / 5 (EN ISO 12945-2)
Light fastness	5-7 / 8 (EN ISO 105-B02)
Rubbing fastness	4-5 / 5, 4-5 / 5 (EN ISO 105x12 (wet, dry))
Abrasion	110,000 rubs Martindale (EN ISO 12947-2)
Environment	STANDARD 100 by OEKO-TEX®, EU Ecolabel

Bond	G2 (Gabriel)
Composition	100% post-consumer recycled polyester
Flammability	BS EN 1021 1&2 Cigarette and Match CA TB 117-2013 Will also pass other flammability standards. Flame retardant performance is dependent upon the foam used. Contains no flame retardant chemicals.
Weight	530 g/lm
Width	140 cm
Pilling	5 / 5 (EN ISO 12945-2)
Light fastness	6-7 / 8 (EN ISO 105-B02)
Rubbing fastness	4-5 / 5, 4-5 / 5 (EN ISO 105x12 (wet, dry))
Abrasion	100,000 rubs Martindale (EN ISO 12947-2)
Environment	STANDARD 100 by OEKO-TEX®, EU Ecolabel

Bondai	G1 (Fidivi)
Composition	100% polyester
Flammability	1 IM (UNI 9175) / BS 7176 / California TB 117 / CRIB 5 (BS 5852 part II) / EN 1021-1&2 / Euroclass EN 13501-1
Weight	350 g/lm
Width	140 cm
Pilling	5 / 5 (EN ISO 12945-2)
Light fastness	6 / 8 (EN ISO 105-B02)
Rubbing fastness	5 / 5, 5 / 5 (EN ISO 105x12 (wet, dry))
Abrasion	150,000 rubs Martindale (EN ISO 12947-2)
Environment	STANDARD 100 by OEKO-TEX®

Era	G1 (Camira)
Composition	100% polyester, non metallic dyestuffs
Flammability	EN 1021 – 1&2 (cigarette & match) / BS 7176 Low Hazard EN 13501-1 Adhered Class B, s1, d0 / EN 13501-1 Un-adhered Class C, s1, d0 / BS 5852 Ignition Source 5 with EnviroFlam5 / BS 7176 Medium Hazard with EnviroFlam5 / The Furniture & Furnishing (Fire Safety) Regulations 1988 (UK domestic cig & match) with EnviroFlam5
Weight	320 g/lm
Width	140 cm
Light fastness	5 / 8 (EN ISO 105-B02)
Rubbing fastness	4 / 5, 4 / 5 (EN ISO 105x12 (wet, dry))
Abrasion	≥ 100,000 rubs Martindale (EN ISO 12947-2)
Environment	STANDARD 100 by OEKO-TEX®, Indoor Advantage Gold

Felicity	G3 (Gabriel)
Composition	100% post-consumer recycled polyester
Flammability	BS EN 1021 1&2 Cigarette and Match BS EN 1021-1 Cigarette CA TB 117-2013 Will also pass other flammability standards. Flame retardant performance is dependent upon the foam used. Contains no flame retardant chemicals.
Weight	430 g/lm
Width	140 cm
Pilling	5 / 5 (EN ISO 12945-2)
Light fastness	5-7 / 8 (EN ISO 105-B02)
Rubbing fastness	4-5 / 5, 4-5 / 5 (EN ISO 105x12 (wet, dry))
Abrasion	90,000 rubs Martindale (EN ISO 12947-2)
Environment	STANDARD 100 by OEKO-TEX®, EU Ecolabel, Cradle to Cradle Certified® Bronze

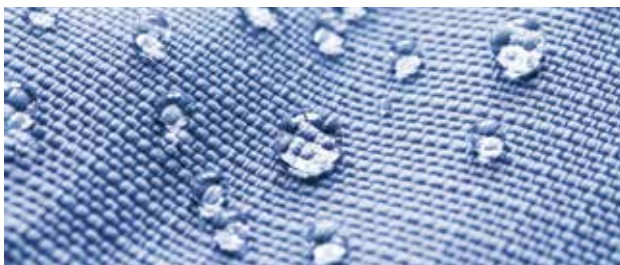
Main Line Flax	G4 (Camira)
Composition	75% virgin wool (schurwolle), 25% flax
Flammability	EN 1021 – 1&2 (cigarette & match) / BS 7176 Low Hazard BS 5852 Ignition Source 5 / BS 7176 Medium Hazard / NF D 60-013 / ÖNORM B 3825 & A 3800-1 (58kg/m3 CMHR Foam) / UNI 9175 Classe 1 IM / BS 5867-2: Type B Curtains & Drapes / IMO FTP Code (Part 8) The Furniture and Furnishing (Fire) (Safety) Regulations 1988 (Domestic Cigarette and Match)
Weight	437 g/lm
Width	140 cm
Light fastness	5 / 8 (EN ISO 105-B02)
Rubbing fastness	3 / 5, 4 / 5 (EN ISO 105x12 (wet, dry))
Abrasion	≥ 50,000 rubs Martindale (EN ISO 12947-2)
Environment	STANDARD 100 by OEKO-TEX®, Indoor Advantage Gold

Milan	G3 (Eurotex)
Composition	100% polyester
Weight	675 g/lm
Width	145 cm
Light fastness	4,5 / 8 (EN ISO 105-B02)
Rubbing fastness	4 / 5, 4-5 / 5 (EN ISO 105x12 (wet, dry))
Abrasion	≥ 80,000 rubs Martindale (EN ISO 12947-2)
Environment	STANDARD 100 by OEKO-TEX®

Rivet	G1 (Camira)
Composition	100% post-consumer recycled polyester
Flammability	EN 1021 - 1&2 (cigarette & match) / BS 7176 Low Hazard UNI 9175 Classe 1 IM / BS 5852 Ignition Source 5 with EnviroFlam5 / BS 7176 Medium Hazard with EnviroFlam5 / The Furniture & Furnishing (Fire Safety) Regulations 1988 (UK domestic cig & match) with EnviroFlam5
Weight	280 g/lm
Width	140 cm
Light fastness	5-6 / 8 (EN ISO 105-B02)
Rubbing fastness	4 / 5, 4 / 5 (EN ISO 105x12 (wet, dry))
Abrasion	≥ 80,000 rubs Martindale (EN ISO 12947-2)
Environment	EU Ecolabel, Indoor Advantage Gold

Step	G3 (Gabriel)
Composition	100% trevira cs
Flammability	BS EN 1021 1&2 Cigarette and Match / BS EN 1021-1 Cigarette / BS 5852 Crib 5 / BS 7176 Medium hazard / DIN 4102 - B1 / NFP 92-503/504/505 M1 / AM 18 - NF D 60-013-(only for fabric) / ÖNORM A3800-B1-B3825-Q1 UK / FAR/JAR 25.853 (a) (i) (ii) / DIN EN 13501-1 B-s1,d0 / Class Uno UNI 9175 Class 1 I EMME / CA TB 117-2013 / IMO MSC 307(88) Annex 1 part 8 / MED Certificate IMO / IMO MSC 307(88) Annex 1 part 8 UK / MED Certificate IMO UK Will also pass other flammability standards. Flame retardant performance is dependent upon the foam used.
Weight	470 g/lm
Width	140 cm
Light fastness	5-7 / 8 (EN ISO 105-B02)
Rubbing fastness	4-5 / 5, 4-5 / 5 (EN ISO 105x12 (wet, dry))
Abrasion	100,000 rubs Martindale (EN ISO 12947-2)
Environment	STANDARD 100 by OEKO-TEX®, EU Ecolabel

Step Melange	G3 (Gabriel)
Composition	100% trevira cs
Flammability	DIN 4102 - B1 / NFP 92-503/504/505 M1 / BS EN 1021 1&2 Cigarette and Match / BS EN 1021-1 Cigarette / BS 5852 Crib 5 / ÖNORM A3800-B1-B3825-Q1 UK / FAR/JAR 25.853 (a) (i) (ii) / AM 18 - NF D 60-013-(only for fabric) / CA TB 117-2013 / Class Uno UNI 9175 Class 1 I EMME / DIN EN 13501-1 B-s1,d0 / IMO MSC 307(88) Annex 1 part 8 / MED Certificate IMO / IMO MSC 307(88) Annex 1 part 8 UK / MED Certificate IMO UK Will also pass other flammability standards. Flame retardant performance is dependent upon the foam used.
Weight	470 g/lm
Width	140 cm
Light fastness	5-7 / 8 (EN ISO 105-B02)
Rubbing fastness	4-5 / 5, 4-5 / 5 (EN ISO 105x12 (wet, dry))
Abrasion	100,000 rubs Martindale (EN ISO 12947-2)
Environment	STANDARD 100 by OEKO-TEX®, EU Ecolabel



All upholstery materials in our collection can be treated with Nano protection.

Synergy	G5 (Camira)
Composition	95% virgin wool (schurwolle), 5% polyamide
Flammability	EN 1021 - 1&2 (cigarette & match) / BS 7176 Low Hazard NF D 60-013 / ÖNORM B 3825 & A 3800-1 (58 kg/m ³ CMHR Foam) / UNI 9175 Classe 1 IM / EN 13501-1 Adhered Class D, s1, d0 / IMO FTP Code (Part 8) / The Furniture and Furnishing (Fire) (Safety) Regulations 1988 (Domestic Cigarette and Match) / BS 5852 Ignition Source 5 when FR treated / BS 7176 Medium Hazard when FR treated / EN 13501-1 Adhered Class B, s1, d0 when FR treated / EN 13501-1 Un-adhered Class D, s2, d0 when FR treated
Weight	400 g/lm
Width	140 cm
Light fastness	5 / 8 (EN ISO 105-B02)
Rubbing fastness	4 / 5, 4 / 5 (EN ISO 105x12 (wet, dry))
Abrasion	≥ 100,000 rubs Martindale (EN ISO 12947-2)
Environment	EU Ecolabel, Indoor Advantage Gold

Tonal	G1 (Gabriel)
Composition	100% post-consumer recycled polyester
Flammability	CA TB 117-2013 / ASTM E 84 Class I / BS EN 1021 1&2 Cigarette and Match / BS 476 Part 7 class I / DIN EN 13501-1 B-s1,d0(glued) Will also pass other flammability standards. Flame retardant performance is dependent upon the foam used. Contains no flame retardant chemicals.
Weight	315 g/lm
Width	140 cm
Pilling	4-5 / 5 (EN ISO 12945-2)
Light fastness	6-8 / 8 (EN ISO 105-B02)
Rubbing fastness	4-5 / 5, 4-5 / 5 (EN ISO 105x12 (wet, dry))
Abrasion	100,000 rubs Martindale (EN ISO 12947-2)
Environment	STANDARD 100 by OEKO-TEX® / EU Ecolabel

Xtreme	G2 (Camira)
Composition	100% post-consumer recycled polyester
Flammability	EN 1021 - 1&2 (cigarette & match) / BS 7176 Low Hazard BS 5852 Ignition Source 5 / BS 7176 Medium Hazard DIN 4102 B1 / NF D 60-013 ÖNORM B 3825 & A 3800-1 (over 58 kg/m ³ CMHR foam) / UNI 9175 Classe 1 IM / BS 476 Part 7 Class 1 (Adhered) Flame retardant performance is dependent upon the foam used.
Weight	310 g/lm
Width	140 cm
Light fastness	6 / 8 (EN ISO 105-B02)
Rubbing fastness	4 / 5, 4 / 5 (EN ISO 105x12 (wet, dry))
Abrasion	≥ 100,000 rubs Martindale (EN ISO 12947-2)
Environment	STANDARD 100 by OEKO-TEX®, EU Ecolabel, Indoor Advantage Gold

24/7 Flax	G4 (Camira)
Composition	54% polyamide, 35% virgin wool (schurwolle), 11% flax
Flammability	EN 1021 - 1 (Cigarette), EN 1021 - 2 (Match), BS 7176 Low Hazard BS 5852 Ignition Source 5, BS 7176 Medium Hazard, NF D 60-013, UNI 9175 Classe 1 IM, IMO FTP Code (Part 8) Flame retardant performance is dependent upon the foam used.
Weight	390 g/lm
Width	140 cm
Light fastness	5 / 8 (EN ISO 105-B02)
Rubbing fastness	4 / 5, 4 / 5 (EN ISO 105x12 (wet, dry))
Abrasion	≥ 200,000 rubs Martindale (EN ISO 12947-2)



Viasit Bürositzmöbel GmbH
Boxbergweg 4
D-66538 Neunkirchen

Viasit International Ltd.
1–5 Clerkenwell Road
London EC1M 5PA
United Kingdom

www.viasit.com
info@viasit.com

